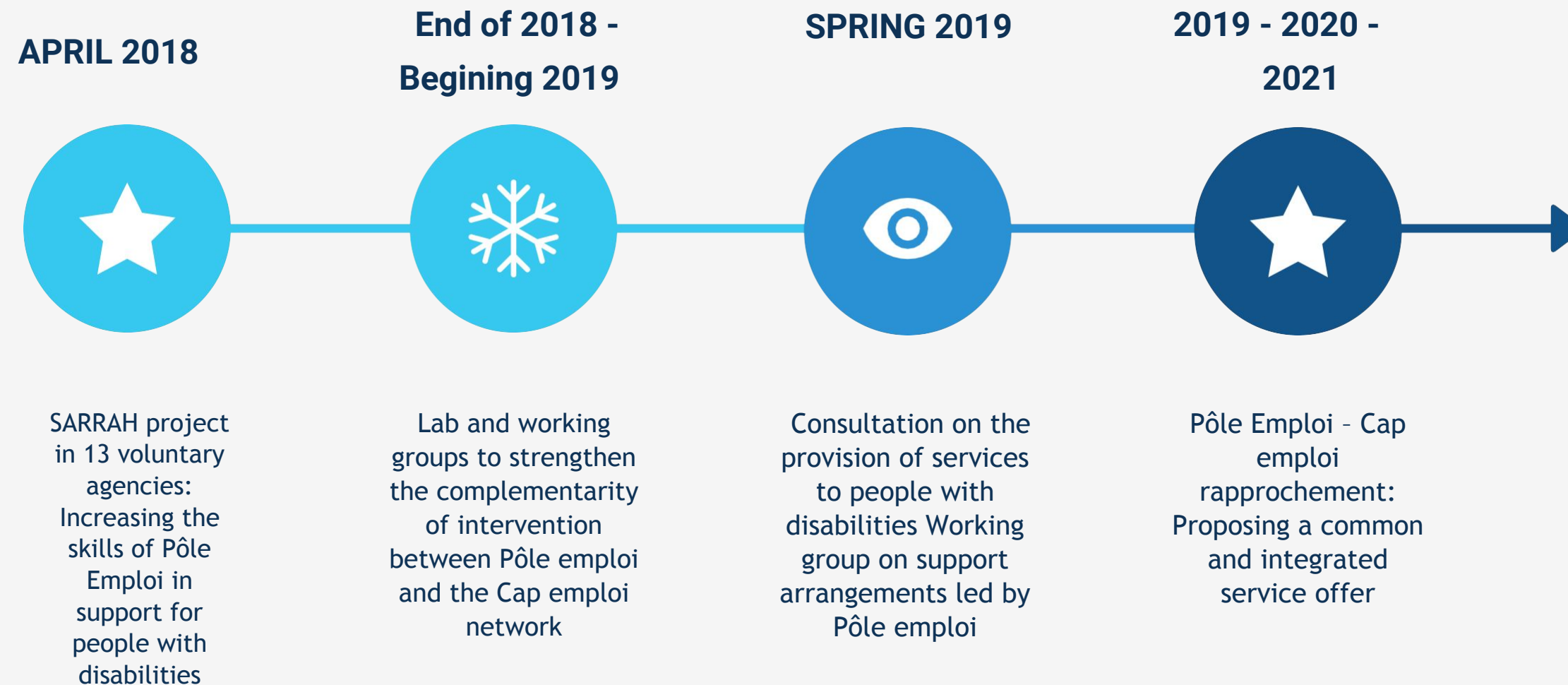


Cap emploi and Pôle emploi join forces for a better service



Pôle emploi and Cheops, the Cap emploi network, have decided to combine their strength and expertise in favour of a better service offer. This project is part of the five-party agreement signed in September 2020 between the State, Agefiph, FIPHFP, Cheops and Pôle emploi. The aim is to co-construct a new range of services for disabled workers and employers.



The goals of the Cap Emploi - Pôle emploi merger



1

Improve the recruitment of all Jobseekers with disabilities.

2

Establish a real complementarity between Pôle emploi and the Cap emploi network.

3

Build a common and inclusive service offer.

4

Strengthen partnerships with other economic and associative actors at national and territorial level.

Some key figures

500.000

the number of disabled people registered with Pôle emploi, i.e. 8.5% of jobseekers



36% vs 65%

employed persons with disabilities in relation to the rest of the population



2 times less

the return to work of jobseekers with disabilities in relation to other jobseekers

Global support: a solution for the most vulnerable jobseekers

- Launched in 2014, global support is a service aimed at job seekers facing a combination of social and professional obstacles.

The people concerned experience social difficulties, known as "peripheral" (transport, housing, health, etc.), which hinder their return to work.

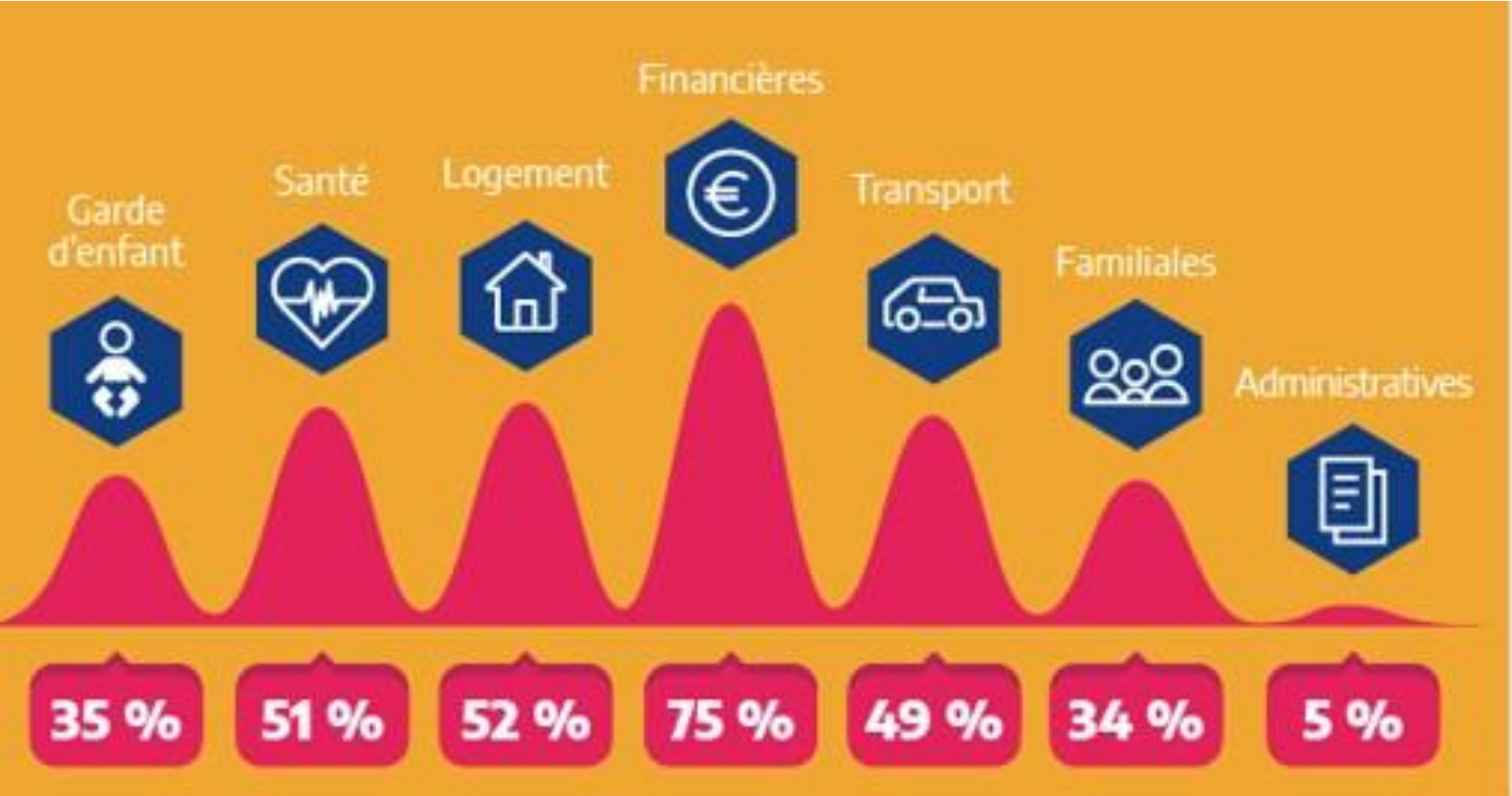
About 2 thirds of the people concerned by the Global Support have at least 3 "peripheral" difficulties.

The success of this system lies largely in the personalization and intensity of the support: the beneficiaries carry out more frequent and adapted interviews over time. This allows advisors to have a better knowledge of their needs.

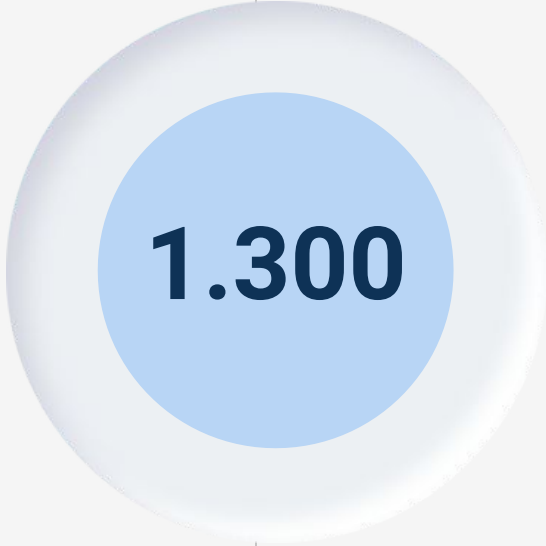


Global Support is at the heart of the national strategy to prevent and combat poverty. Aimed at the most vulnerable, this device allows them better access to sustainable employment.

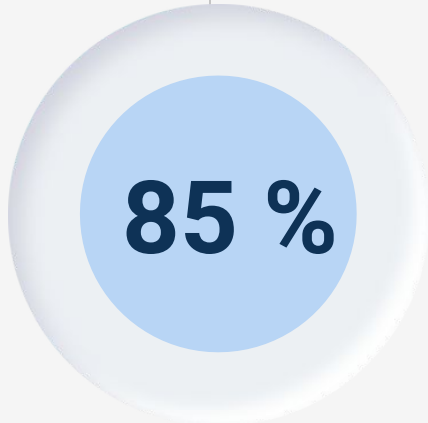
The main peripheral difficulties



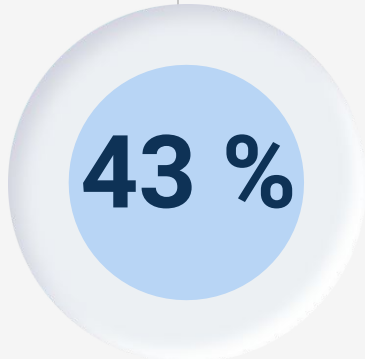
Jobseekers benefit from Global Support in 2019



Pôle emploi advisors are dedicated to Global Support



This is the satisfaction rate of applicants in Global Accompaniment



Follow-up people find a job of more than one month within an average of 10 months

#1Jeune1solution

Launched in the summer of 2020 with a budget of more than 9 billion euros, the plan “#1Jeune1solution” (1 Young 1 solution) must enable each young person to find a job, training or support towards employment adapted to his needs.

This plan focuses on a set of 18 measures that respond to three priorities:

- facilitate the entry of young people into working life
- simplify their access to training or missions of social utility
- support those who are far from employment with tailor-made integration pathways.

At the heart of the system, the www.1jeune1solution.gouv.fr platform connects companies with young people looking for a job, training or a mission.



The Youth Engagement Contract

- Personalised and intensive support to enable unemployed young people and training to enter the world of work more quickly.
- Since March 1st, all young people under 26 years of age (under 30 years of age for young people with disabilities), without training or employment for several months will be able to benefit from the Youth Engagement Contract with their Local Mission or their Pôle emploi agency:

Intensive support to discover professions, build their professional project, train and find a job



500 000

Young people potentially concerned

2,6 milliards €

dedicated in 2022 to its deployment

Up to **500 €**

financial assistance per month if the young person needs it

15 à 20 heures

Per week of intensive and personalized support

1 application

mobile app so that the young can follow his path and keep his commitments



4

**Contrat
d'Engagement
Jeune**